

**A geodatabase is a central storage location for features, related datasets and behaviors.**

**We will start by creating a geodatabase named Training\_Day1.mdb**



**1. To create a new folder called ArcPad Training**

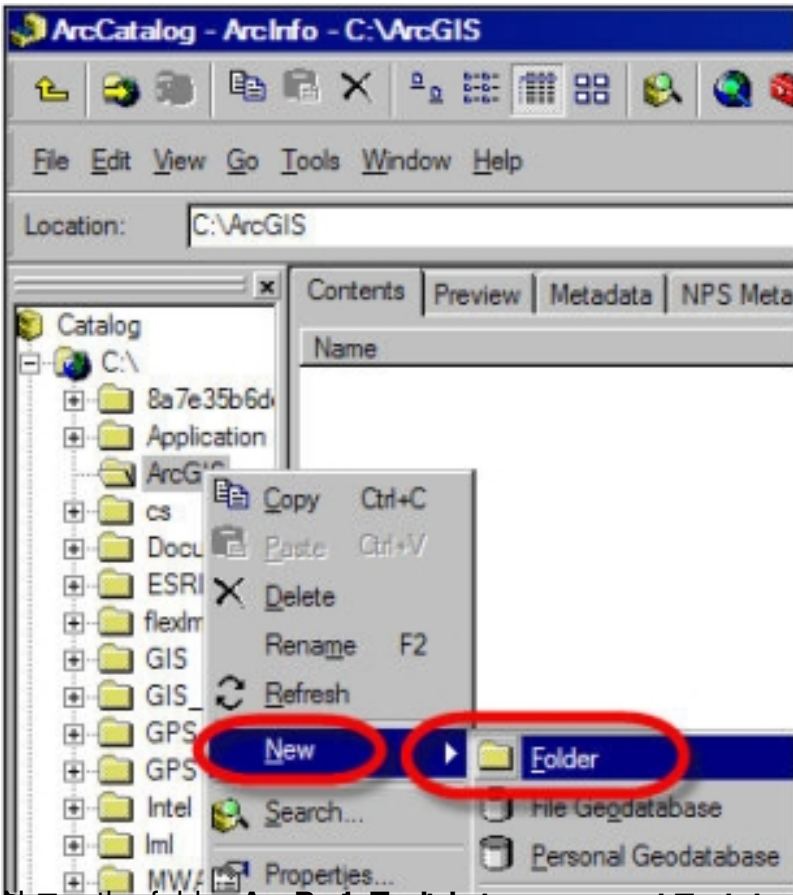
Start **ArcCatalog**

The left panel of ArcCatalog is the **ArcCatalog tree**

In the ArcCatalog tree, right-click on **C:ArcGIS**

Choose **New / Folder**

## Step 1: Create the Geodatabase



Right-click on the ArcInfo folder and name the folder Training\_Day1.mdb

Step 1: Create the Geodatabase

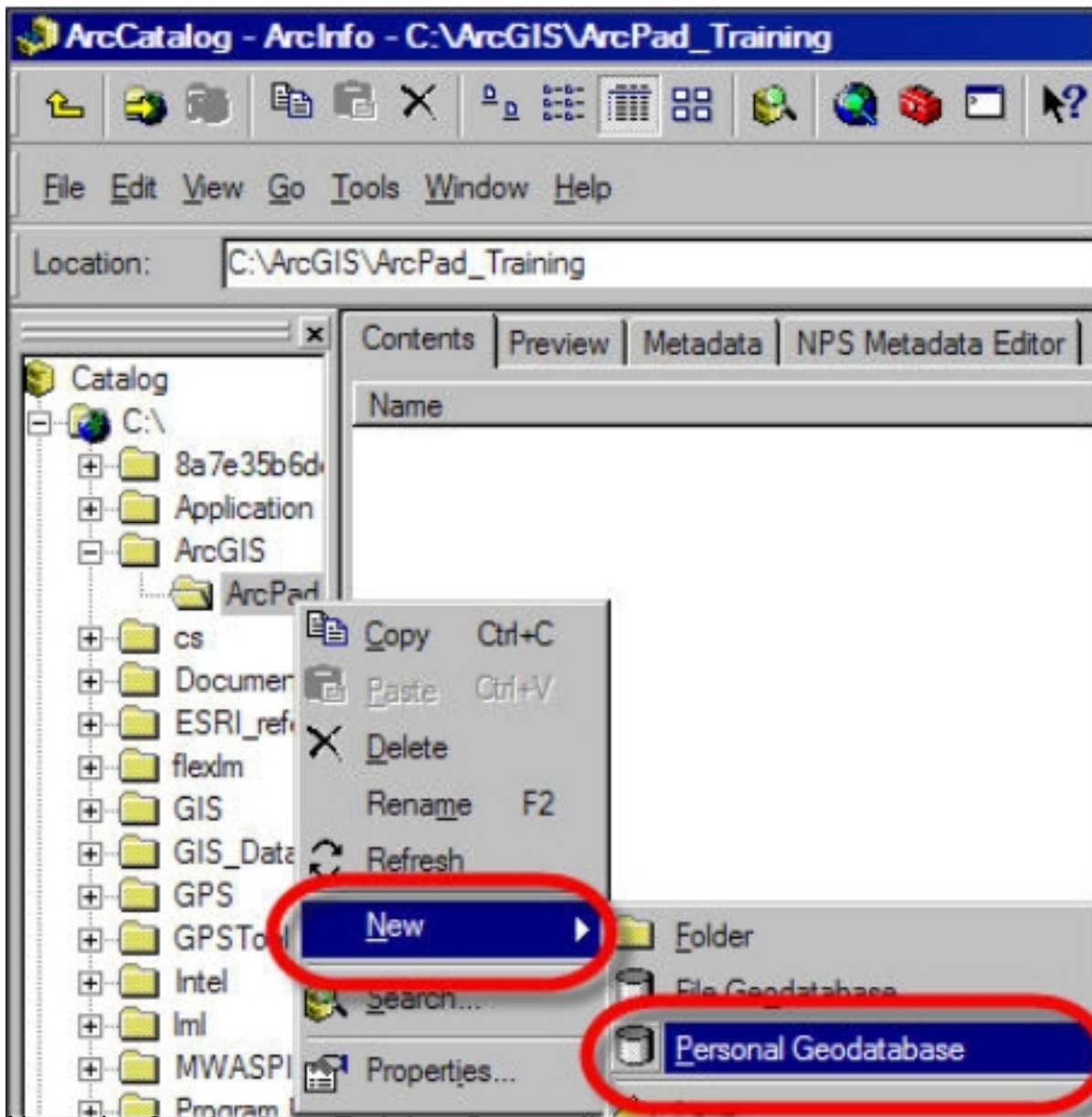
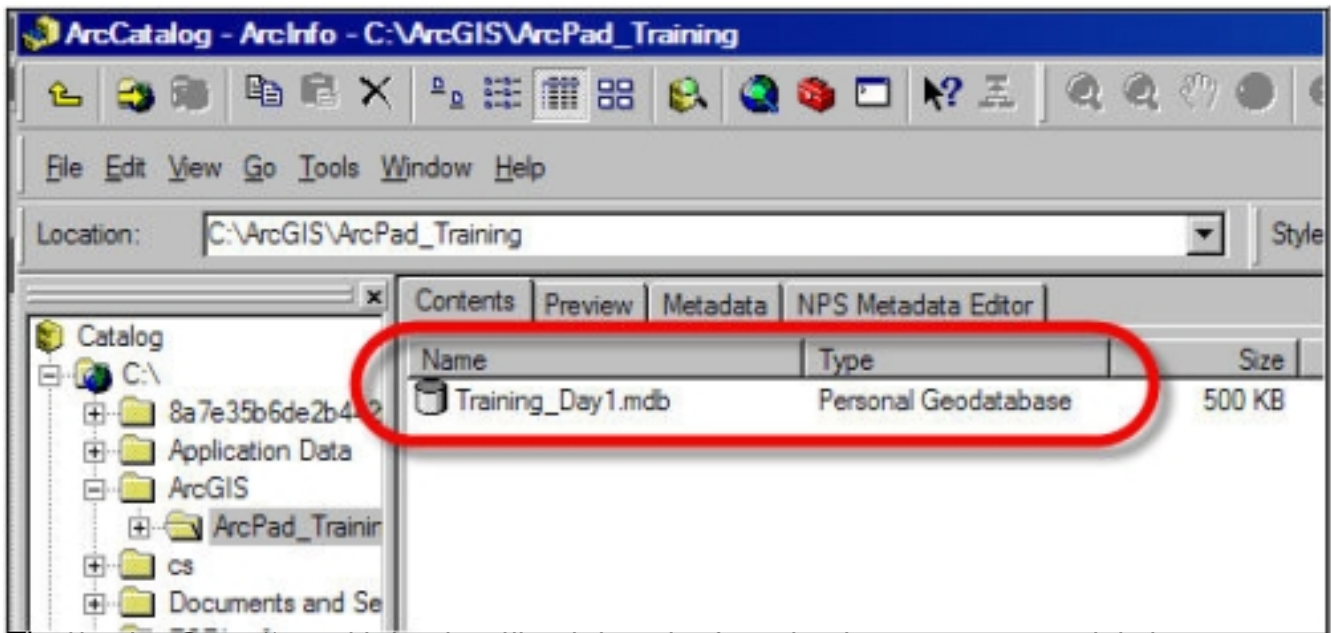
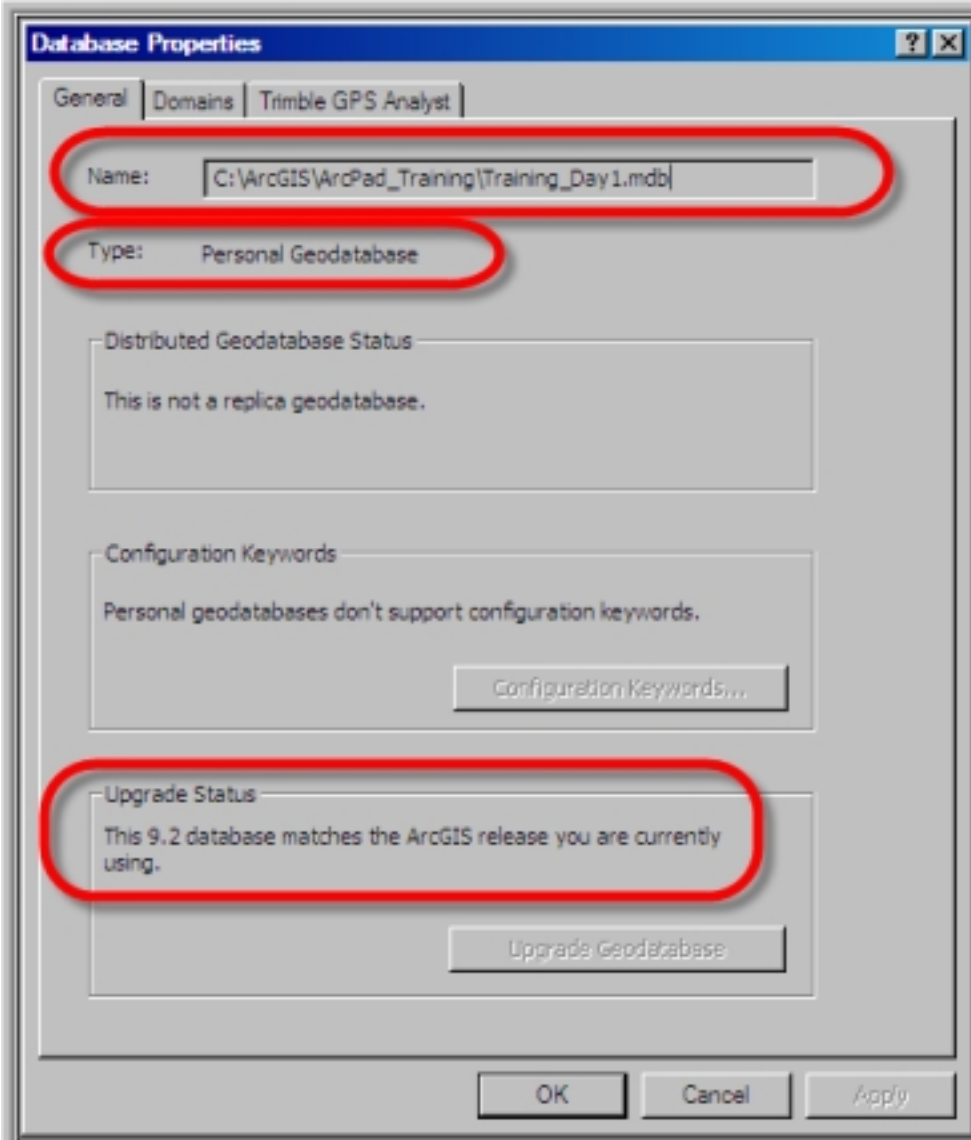


Figure 1: Creating a Personal Geodatabase in ArcCatalog

## Step 1: Create the Geodatabase



Do not use spaces, periods, slashes, or other special characters in file names



On the File menu, click Database and click New Geodatabase. In the New Geodatabase dialog box, click Personal Geodatabase. In the Name field, type the name of the geodatabase. In the Location field, type the path to the folder where you want to create the geodatabase. Click OK.

**You have now created the personal geodatabase Training\_Day1.mdb. In the next step, we will create a feature dataset for this geodatabase.**