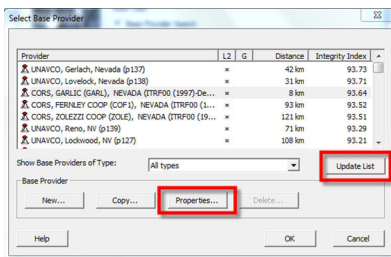


A. View Trimble CBS coordinates

1. Update Trimble CBS list

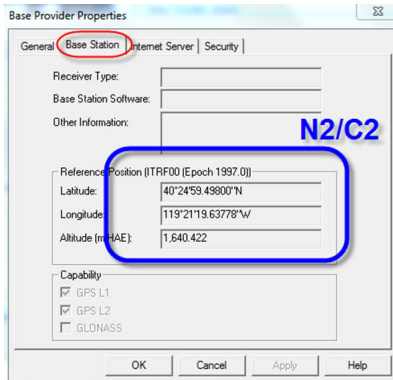


2. Select a CORS station near your GPS data

i.e. GARLIC (GARL), NEVADA (ITRF00(1997)-Derived from IGS08)

3. Click on the **Properties** tab

4. The Reference Position in **ITRF00 epoch 1997** is on the **Base Station tab**



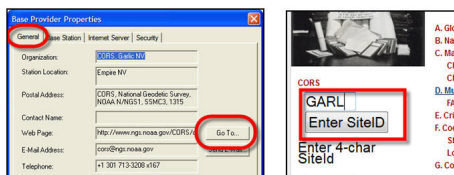
B. View base station coordinates on NGS datasheets

□

1. Click on the **General tab**

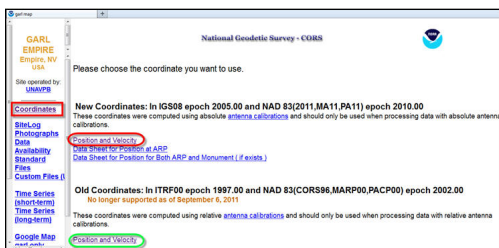
2. Click on **Go To** to open the CORS web page

Site ID should be entered already



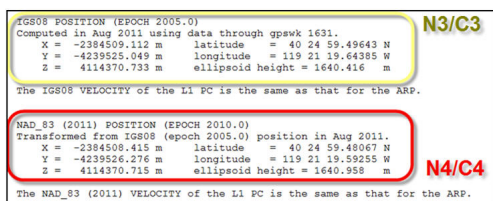
3. Click on **Enter Site ID**

4. Click on **Coordinates** on the left



5. Under New Coordinates, click on Position and Velocity

View Absolute antennae position for L1 Phase Center (not ARP)



6. Under **Old Coordinates**, click on **Position and Velocity**

View Relative antennae position for **L1 Phase Center (not ARP)**

```
L1 Phase Center of the current GPS antenna: GABLIC CORS L1 PC C
-----
The D/M element, choke rings, -radome antenna
(Antenna Code = TRM29659.00) was installed on 07/21/96 at 2240GMT.
The L2 phase center is 0.018 m above the L1 phase center.
PID = A18809

ITRF00 POSITION (EPOCH 1997.0)
Computed in Apr. 2006 using 1440 days of data.
X = -2384508.965 m latitude = 40 24 59.49829 N
Y = -4239525.088 m longitude = 119 21 19.63761 W
Z = 4114370.777 m ellipsoid height = 1640.416 m

The ITRF00 VELOCITY of the L1 PC is the same as that for the ARP.

NAD_83 (CORS96) POSITION (EPOCH 2002.0)
Transformed from ITRF00 (epoch 1997.0) position in Mar. 2002.
X = -2384508.411 m latitude = 40 24 59.47923 N
Y = -4239526.318 m longitude = 119 21 19.59156 W
Z = 4114370.686 m ellipsoid height = 1640.966 m

The NAD_83 (CORS96) VELOCITY of the L1 PC is the same as that for the ARP.
```

7. For reasons discussed later, also on the **Old Coordinates Position and Velocity**

☐☐☐ sheet, view the relative antennae position for **Antennae Reference Position (ARP)**

☐☐☐ in NAD83(CORS96)

```
NAD_83 (CORS96) POSITION (EPOCH 2002.0)
Transformed from ITRF00 (epoch 1997.0) position in Mar. 2002.
X = -2384508.371 m latitude = 40 24 59.47919 N
Y = -4239526.246 m longitude = 119 21 19.59158 W
Z = 4114370.614 m ellipsoid height = 1640.856 m

NAD_83 (CORS96) VELOCITY
Transformed from ITRF00 velocity in Mar. 2002.
VX = -0.0035 m/yr northward = 0.0005 m/yr
VY = 0.0029 m/yr eastward = -0.0045 m/yr
VZ = -0.0001 m/yr upward = -0.0007 m/yr
```

☐

□